



Instructions for the Usage of the 2011 BayerValue West Rebate Calculator

These instructions are organized according to the following sections. You can use the bookmarks to go directly to that section!

- Section A Follow These Steps!
- Section B Applying the Navigation Buttons
- Section C Applying Other Buttons - Examples of Screen Shots
- Section D Printing a Report
- Section E Using the "RESET" button
- Section F Setting Security Settings for Excel 2003
- Section G Setting Security Settings for Excel 2007

Section A Follow These Steps!

- 1) Change your Security Settings first - See Sections F and G. This is very critical otherwise the Calculator will not work!
- 2) Enter your product purchases and units. ↓

2011 BayerValue

Click on this icon to go to the Web for program details!

Enter Name of Grower:

Input Planned Purchases Here in either Acres or Units!

Brandname	Unit of Meas.	Converted to:		Acres/ Unit	Value
		Acres	Units		
Buctril M	acres	1550.00	77.50	20	\$ 10,373.38
Centurion	acres	450.00	11.25	40	\$ 3,431.25
Decis	acres	600.00	15.00	40	\$ 3,450.00
Folicur '432'	acres	250.00	6.25	40	\$ 2,937.50
Folicur EW	acres	350.00	8.75	40	\$ 4,637.50
Infinity	acres	2875.00	71.88	40	\$ 26,593.75
Liberty	acres	2500.00	62.50	40	\$ 31,000.00
Pardner	acres	100.00	2.50	40	\$ 1,470.00
Proline	acres	1500.00	37.50	40	\$ 38,250.00
Prosaro	acres	2500.00	62.50	40	\$ 40,000.00
Puma Advance	acres	700.00	17.50	40	\$ 12,460.00

Data Entry !
 Enter Acres or Units according to what you clicked on the radio buttons above !
 You can move this box out of the way by dragging with your cursor, or click on another area of this form!



You can use the toggle radio button to chose entering purchases in 'Acres' or 'Units' but you cannot use both, only one or the other.

If the following hint box is in your way, you can move it by dragging out of your way with the mouse.

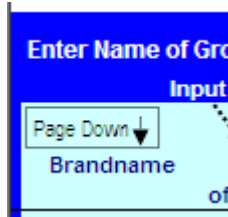
Data Entry !
Enter Acres or Units according to what you clicked on the radio buttons above !
You can move this box out of the way by dragging with your cursor, or click on another area of this form!

3) This Calculator has been designed to produce the rebate estimate automatically as soon as you enter your purchases. There are no buttons required to click in order to produce a calculation.



Section B Applying the Navigation Buttons

This Calculator is divided into four quadrants. Depending on the size of your computer screen and screen resolution, you may not be able to view the entire spreadsheet, therefore, navigation buttons have been added to help you move around the spreadsheet. They are located throughout the spreadsheet as illustrated below.



These navigation icons allow you to move to any of the four quadrants of the spreadsheet.

For example, by clicking on the above navigation button you go down one page to the bottom left of the spreadsheet.

Enrolled in Early Book InVigor ? Yes No

Enter InVigor Purchases Here!

InVigor Health 1141 Prosper + Jumpstart 22.7 Kg	1500.00	\$	82,350.00
1,500.00 150.00 10			
InVigor 9590 Prosper + JumpStart 454 Kg	200.00	\$	11,080.00
200.00 1.00 200			
InVigor 8440 Prosper + JumpStart 454 Kg	225.00	\$	12,465.00
225.00 1.13 200			
InVigor 9590 Prosper 22.7 Kg	25.00	\$	1,260.00
25.00 2.50 10			
Total Builder Products Purchase Value	\$		477,029.10

Page Up ↑ Page Top-Right →↑



In the example above, you can page down to the 3rd quadrant of the calculator to find important items such as the total amount of the estimated rebate.

26-Jan-11

e Program

Page Down ↓
Page Top-Left ←▲

	Total	Savings	Rebate
	Purchase Value	Level %	\$
\$75,000 level reached!			
Bayer Rewards			
Tundra, Velocity M3	\$ -	4.0%	\$ -
Infinity, Folicur and Provaro	\$ 17,227.60	12.0%	\$ 2,067.31
Decis and Sevin XLR	\$ 2,814.00	20.0%	\$ 562.80
Raxil Brands and Trilex AL	\$ 9,269.50	25.0%	\$ 1,765.00
Bayer Reward Savings:			\$ 4,395.11 Line 1.0
Early Book InVigor Program*			
*Must enroll in this program!			
Eligible InVigor Acres			12,000.00
Infinity	\$ 1,480.00	10.0%	\$ 148.00
Folicur or Provaro	\$ 15,747.60	8.0%	\$ 1,259.81
Decis or Sevin XLR	\$ 2,814.00	variable	\$ 37.20
Raxil Brands or Trilex AL	\$ 4,180.00	variable	\$ 55.00
Proline Bonus	\$ 14,700.00	25.0%	\$ 3,675.00
Early Book InVigor Savings:			\$ 5,175.01 Line 2.0
Total BayerValue Estimated Savings:			\$ 9,570.12 (Line 1+2)

Alert! Enable Macros

2011 Program Features

Bulk Conversions

Print Report

Detailed Calcs

Disclaimer

Reset

Early Book InVigor Calcs



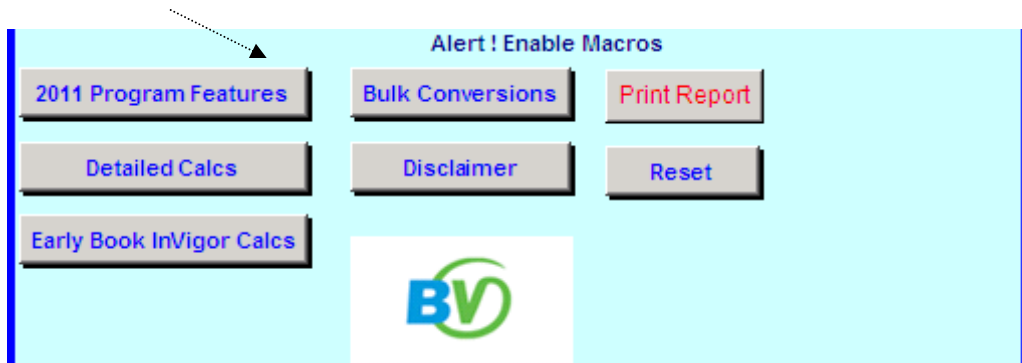
The bottom right-hand mid-quadrant will show a calculation summary and savings summary by brand;

BayerValue Savings		17.58%
Summary of Savings by Brand		Page Down ↓
	\$ Rebate	Savings %
Decis	\$ 600.00	21%
Folicur	\$ 2,334.00	20%
Infinity	\$ 325.60	22%
Proline	\$ 3,675.00	25%
Prosaro	\$ 815.52	20%
Raxil	\$ 1,820.00	20%
Sevin	\$ -	0%
Tundra	\$ -	0%
Trilex AL	\$ -	0%
Velocity M3	\$ -	0%
Overall Savings for Payable Brands	\$ 9,570.12	22%
Summary - Estimate of Savings!		
Bayer Reward Savings		\$ 4,395.11
Early Book InVigor Savings		\$ 5,175.01
Page Up ↑	Total Savings	\$ 9,570.12
Version V011.1 (Effective Sept 3, 2010)		



Section C Applying Other Buttons - Examples of Screen Shots

There are other buttons at the bottom of the spreadsheet which contain certain types of information. Simply click on the button of choice.





For example, pressing the '2011 Program Features' button contains information explaining the nature of the grower program.

2011 Guidelines, page 1.0 X

2011

BAYERVALUE PROGRAM

Purchase Bayer CropScience products and combine your Early Book InVigor® and Bayer Rewards savings.

EARLY BOOK INVIGOR Book by January 31, 2011		+	BAYER REWARDS			
Proline™ Bonus Buy a minimum of 200 acres of InVigor to qualify		InVigor Value Bonus† Save on matching InVigor acres	Bayer Rewards Savings Segment	Qualify at one of the following levels with all Bayer CropScience products		
Buy up to 200 acres (5 jugs or less) and receive 15% savings on all your Proline		Buy more than 200 acres (6 or more jugs) and receive 25% savings on all your Proline		Purchase \$10,000 or more of Bayer CropScience products	Purchase \$40,000 or more of Bayer CropScience products	Purchase \$75,000 or more of Bayer CropScience products
Buy up to 200 acres (5 jugs or less) and receive 15% savings on all your Proline		Infinity® = 10%	Tundra™ Velocity m3	2%	3%	4%
Buy up to 200 acres (5 jugs or less) and receive 15% savings on all your Proline		Folicur®* or Prosaro® = 8%	Infinity Folicur* Prosaro	4%	8%	12%
Buy up to 200 acres (5 jugs or less) and receive 15% savings on all your Proline		Decis®* or Sevin® XLR* = 20%	Decis* Sevin XLR*	10%	15%	20%
Buy up to 200 acres (5 jugs or less) and receive 15% savings on all your Proline		Raxil®* or Trilex® AL* = (up to) 25%	Raxil* Trilex AL*	15%	20%	25%

* Save a maximum of \$1.00/ac. on each acre of Raxil MD, Raxil T, Raxil WW and Trilex AL from the combination of Early Book InVigor and Bayer Rewards.
 † Save a maximum of \$1.25/ac. on each acre of Decis and Sevin XLR from the combination of Early Book InVigor and Bayer Rewards.
 Bayer Rewards includes Folicur 432F and Folicur EW.

Next >>
Close

BAYER REWARDS QUALIFYING BUILDER PRODUCTS

BUCTRIL™
Centurion™
decis™
Folicur™
Folicur™EW
INFINITY™
InVigor™
Liberty™
PARDNER™
PROLINE™
PROSARO™
Puma™

Puma™
Raxil MD
Raxil T
Raxil WW
sencor™
Sevin XLR
STRATEGO™
Thumper™
TUNDRA™
Trilex AL
Velocity™

†The InVigor Value Bonus savings on Decis, Folicur, Infinity, Prosaro, Raxil, Sevin XLR and Trilex AL is limited to the total acres of InVigor hybrid canola purchased.



The following screen is an example of when you click on 'Early Book InVigor Calcs'. Here it shows you how much rebate is available for the Early Book InVigor program for participating products.



Detailed Calculations for Early Book InVigor Program (EBI)

1. Decis available for Early Book InVigor Program is at a \$/Acre of \$0.10 on 600.00 acres. EBI rebate = \$60.00.

2. Sevin available for Early Book InVigor Program is at a \$/Acre of \$0.53 on 400.00 acres. EBI rebate = \$212.00.

3. Prosaro available for Early Book InVigor Program is on 1,950.00 acres. EBI rebate = \$2,496.00.

4. Folicur 432 available for Early Book InVigor Program is on 0.00 acres. EBI rebate = \$0.00.

5. Folicur EW available for Early Book InVigor Program is on 0.00 acres. EBI rebate = \$0.00.

6. Raxil WW \$/Acre maximized on Bayer Rewards, none available for the Early Book InVigor Program !

7. Raxil MD available for Early Book InVigor Program is at a \$/Acre of \$0.02 on 250.00 acres. EBI rebate = \$5.00.

8. Raxil T available for Early Book InVigor Program is at a \$/Acre of \$0.08 on 1,200.00 acres. EBI rebate = \$96.00.


9. Trilex AL \$/Acre maximized on Bayer Rewards, none available for the Early Book InVigor Program !

OK



Section D Printing a Report


Once you have entered all purchases and run the calculations, you can print or preview a report using the button "Print Report". This is an example of what the report would look like. Please note due to scaling, resolutions will be higher on actual printed copy



click on this icon to go to the Web for program details!

2011 BayerValue Rebate Calculator

For Western Canada



28-Jan-11

Enter Name of Grower: _____
28-Jan-11

Input Planned Purchases Here in either Acres or Units

Acres
 Units

BayerValue Program

Brandname	Unit of Meas.	Converted to:		Acres/ Unit	Value	Total Purchase Value	Savings Level %	Rebate \$
		Acres	Units					
Buattril M	8.0L/kg	18.00	300.00	15.00	20	\$ 2,088.80		
Centurion	case	14.00	880.00	14.00	40	\$ 4,270.00		
Deals	2.4L/kg	12.00	480.00	12.00	40	\$ 2,814.00		
Foliar 422	4.7L/kg	18.00	600.00	15.00	40	\$ 6,900.00		
Foliar EW	8.1L/kg	9.00	360.00	9.00	40	\$ 4,770.00		
Infinity	8.1L/kg	8.00	160.00	8.00	20	\$ 1,480.00		
Liberty	13.8L/kg	7.00	70.00	7.00	10	\$ 878.75		
Pardner	8.0L/kg	18.00	160.00	16.00	10	\$ 2,382.00		
Proline	8.1L/kg	14.00	880.00	14.00	40	\$ 14,700.00		
Prosero	8.0L/kg	12.00	240.00	12.00	20	\$ 4,077.80		
Puma Advance	8.0L/kg	11.00	220.00	11.00	20	\$ 2,840.00		
Puma Super	8.0L/kg	14.00	280.00	14.00	20	\$ 3,380.00		
Raxil MD	19L/kg	0.00	0.00	0.00	30	\$ -		
Raxil IT	10L/kg	11.00	1,100.00	11.00	100	\$ 4,180.00		
Raxil WW	10L/2.1L	9.00	720.00	9.00	30	\$ 8,089.80		
Senpar	2.4L/kg	0.00	0.00	0.00	23	\$ -		
Sevin XLR	19L/kg	0.00	0.00	0.00	30	\$ -		
Strikego	8.1L/kg	0.00	0.00	0.00	40	\$ -		
Thumper	8.0L/kg	0.00	0.00	0.00	20	\$ -		
Tundra	8.1L/kg	0.00	0.00	0.00	10	\$ -		
Trilex AL	19L/kg	0.00	0.00	0.00	30	\$ -		
Velocity MS	4L/4.7L case	0.00	0.00	0.00	20	\$ -		
Velocity MS All-in-One	8.1L/kg	0.00	0.00	0.00	20	\$ -		

Bayer Rewards

Tundra, Velocity MS \$ - 40% \$ -

Infinity, Foliar and Prosero \$ 17,237.80 12.0% \$ 2,067.31

Deals and Sevin XLR \$ 2,814.00 20.0% \$ 562.80

Raxil Brands and Trilex AL \$ 9,289.80 25.0% \$ 1,788.00

Bayer Reward Savings: \$ 4,395.11 Line 1.0

Early Book InVigor Program*

Eligible InVigor Acres 12,000.00

Infinity \$ 1,480.00 10.0% \$ 148.00

Foliar or Prosero \$ 15,747.80 9.0% \$ 1,298.91

Deals or Sevin XLR \$ 2,814.00 variable \$ 37.20

Raxil Brands or Trilex AL \$ 4,180.00 variable \$ 88.00

Proline Bonus \$ 14,700.00 25.0% \$ 3,675.00

Early Book InVigor Savings: \$ 5,175.01 Line 2.0

Total BayerValue Estimated Savings: \$ 9,570.12 (Line 1+2)

Alert! Enable Macros

2011 Program Features | Bulk Conversions

Detailed Cals | Disclaimer

Early Book InVigor Cals

BayerValue Savings: 17.53%

Summary of Savings by Brand

Brand	\$ Rebate	Savings %
Deals	\$ 800.00	29%
Foliar	\$ 2,334.00	25%
Infinity	\$ 328.80	22%
Proline	\$ 3,675.00	25%
Prosero	\$ 315.82	25%
Raxil	\$ 1,822.00	25%
Sevin	\$ -	0%
Tundra	\$ -	0%
Trilex AL	\$ -	0%
Velocity MS	\$ -	0%
Overall Savings for Payable Brands	\$ 9,570.12	22%

Summary - Estimate of Savings!

Bayer Reward Savings	\$ 4,395.11
Early Book InVigor Savings	\$ 5,175.01
Total Savings	\$ 9,570.12

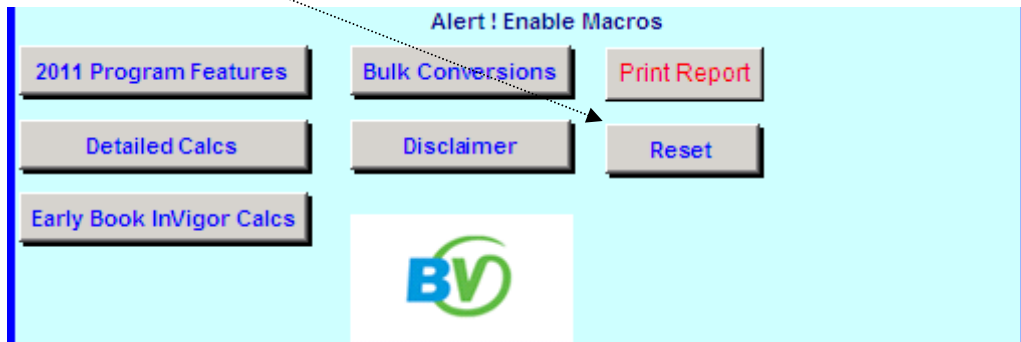
Total Builder Products Purchase Value \$ 724,378.05

Version V011.1 (Effective Sept 3, 2010)



Section E Using the "RESET" button

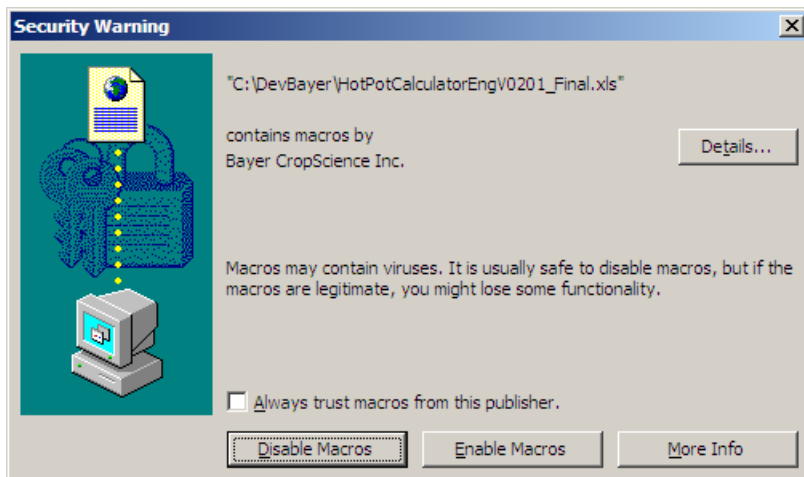
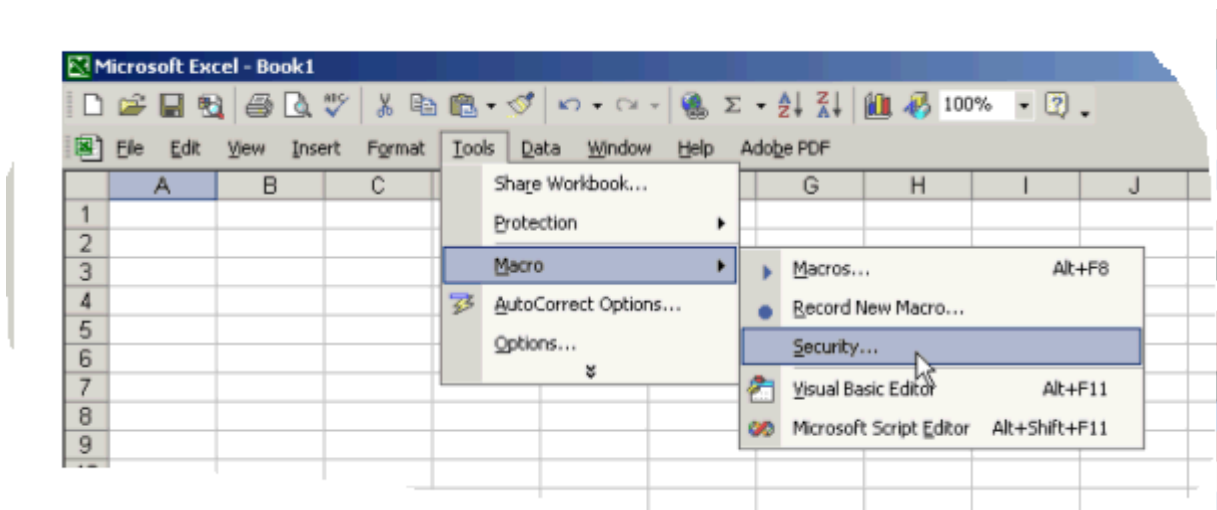
By clicking on the RESET button, you clear the spreadsheet of any information you may have entered. All calculations are also cleared. This allows you to start a new calculation for another scenario or farm account. You should save your information to a unique filename before using RESET.





Section F Setting Security Settings for Excel 2003

- 1) In order for the 'buttons' on the Calculator to work, you must configure this Excel spreadsheet as indicated in these screen shots and steps. Change the security settings to Medium.
- 2) Once completed, you will have to re-open the Calculator spreadsheet.
- 3) When you re-open the spreadsheet, "Enable the Macros". This will ensure the 'buttons' work. These 'buttons' contain important information as described in earlier sections of this document.



- 4) Once these steps are completed you can re-open the Calculator unless these steps were completed in a prior session. You only have to configure this security once.



Section G Setting Security Settings for Excel 2007

To change security settings in Windows Vista or Windows 7, for Excel macros, this is done directly in Excel.

This Calculator was developed in Excel 2003. However, it will also work in Excel 2007 in what is referred to as Compatibility Mode. Simply opening this file up in Excel 2007 will put the file in Compatibility Mode. However, to ensure the macros and computer VBA code work in Excel 2007, you must adjust Excel's security settings. If you are not comfortable on how to do this, consult with your System Administrator.

To change the security settings in Excel 2007, follow either one of these approaches;

First approach;

1. When you open the Calculator filename in Excel 2007, the following window appears; (Your System Administrator may have your Views altered to look somewhat different than what is shown in this illustration but the look and feel will be very similar to what you see here).
2. A security warning will appear, implying that some content of the Calculator will be disabled. This content must be enabled in order for the Calculator to be functional.



BVCalculatorWestEngV011_1.xls [Read-Only] [Compatibility Mode] - Microsoft Excel

Home Insert Page Layout Formulas Data Review View

Paste Font Alignment Number Styles

Security Warning Macros have been disabled. Options...

D12 450

BayerValue
click on this icon to go to the Web for program details!

2011 BayerValue Rebate Calculator

for Western Canada

Enter Name of Grower: MyFarm Inc 18

Input Planned Purchases Here in either Acres or Units!

Brandname	Unit of Meas.	Input		Converted to:		Acres/ Unit	Value	Purch
		Acres	Units	Acres	Units			
Buctril M	acres	1550.00		1,550.00	77.50	20	\$ 10,687.25	
Centurion	acres	450.00		450.00	11.25	40	\$ 3,431.25	
Decis	acres	600.00		600.00	15.00	40	\$ 3,517.50	
Folicur '432'	acres	250.00		250.00	6.25	40	\$ 2,875.00	
Folicur EW	acres	350.00		350.00			.50	
Infinity	acres	2875.00		2,875.00	1		.75	
Liberty	acres	2500.00		2,500.00	2		.50	
Pardner	acres	100.00		100.00			.00	
Proline	acres	1500.00		1,500.00			.00	

BayerValue Program

Bayer Rewards

Tundra, Velocity M3 \$

Infinity, Folicur and Prosaro \$

Decis and Sevin XLR \$

Raxil Brands and Trilex AL \$

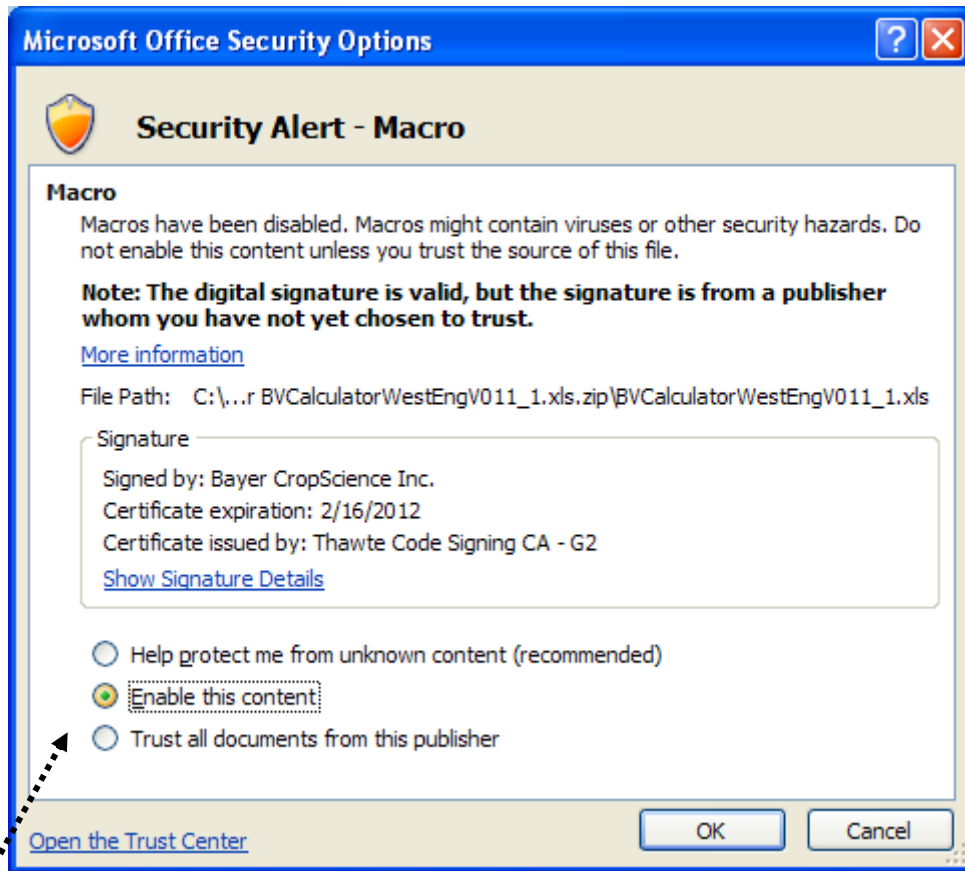
Bayer Reward Savings

Early Book InVigor Program*

Data Entry !
Enter Acres or Units according to what you clicked on the radio buttons above!
You can move this box out of

3. Click on 'Options' and the following window will appear:

(Incidentally the screen shot shown above applies to another Bayer CropScience program, however, but the method of setting security settings is also valid for the BayerValue Rebate Calculator).

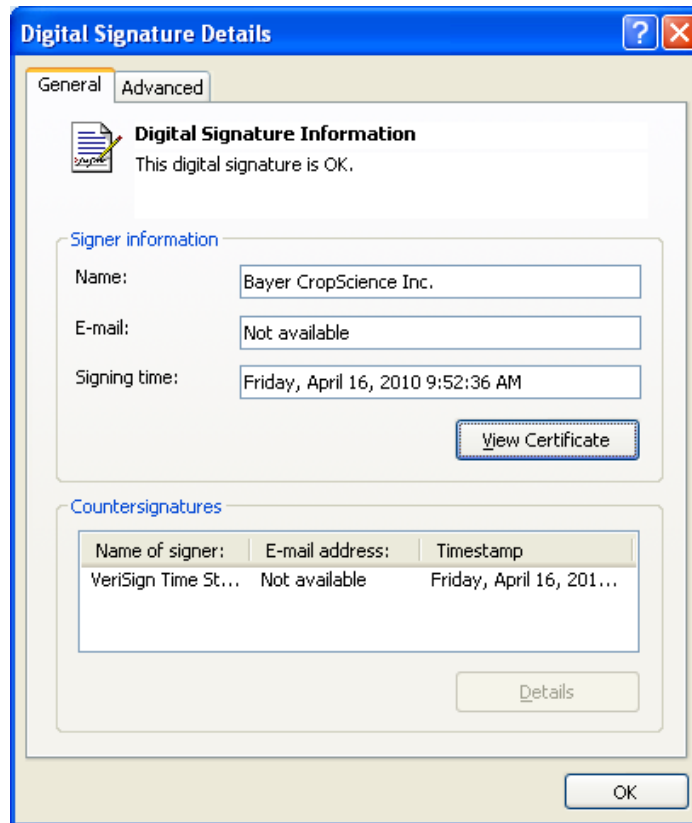


4. This window allows you the choice of leaving the default as is, enabling this content, or trusting the publisher. If you want to view who the publisher is and confirm that this Calculator was digitally signed by this publisher, then you can click on 'Show Signature Details'.

It is your decision whether you want to trust this publisher or enable this content. If you are unsure, consult with your Systems Administrator. Bearing in mind, not applying either of these two choices will not enable this Calculator to function as intended.

5. The following window appears if you click on 'Show Signature Details' as indicated in the previous bullet point.

This window allows you to view the digital certificate from Bayer CropScience.

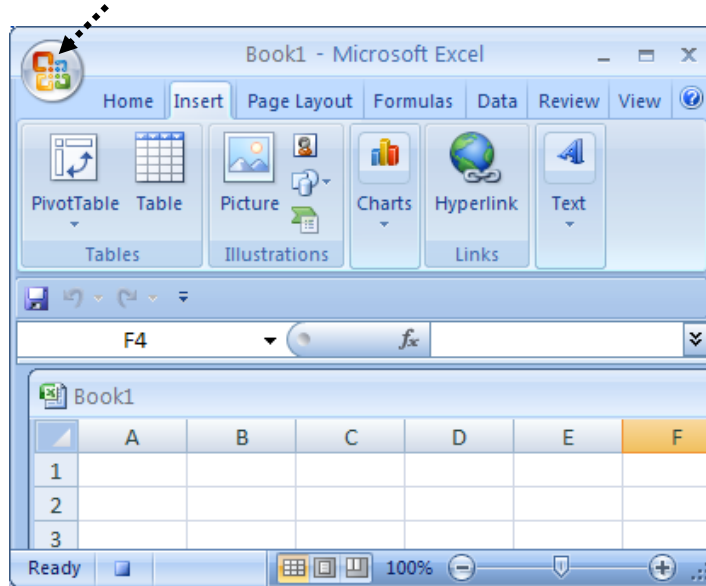


6. If you selected 'Enable this content' or 'Trust all documents from this publisher' then your security settings have been changed.

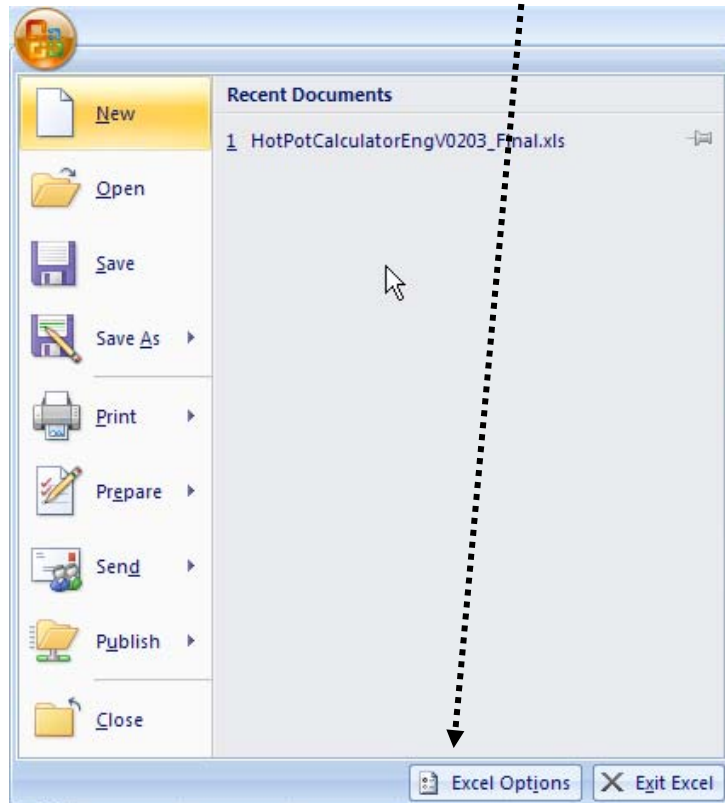


Second Approach

1. From the main Excel menu bar, click on the Microsoft logo.

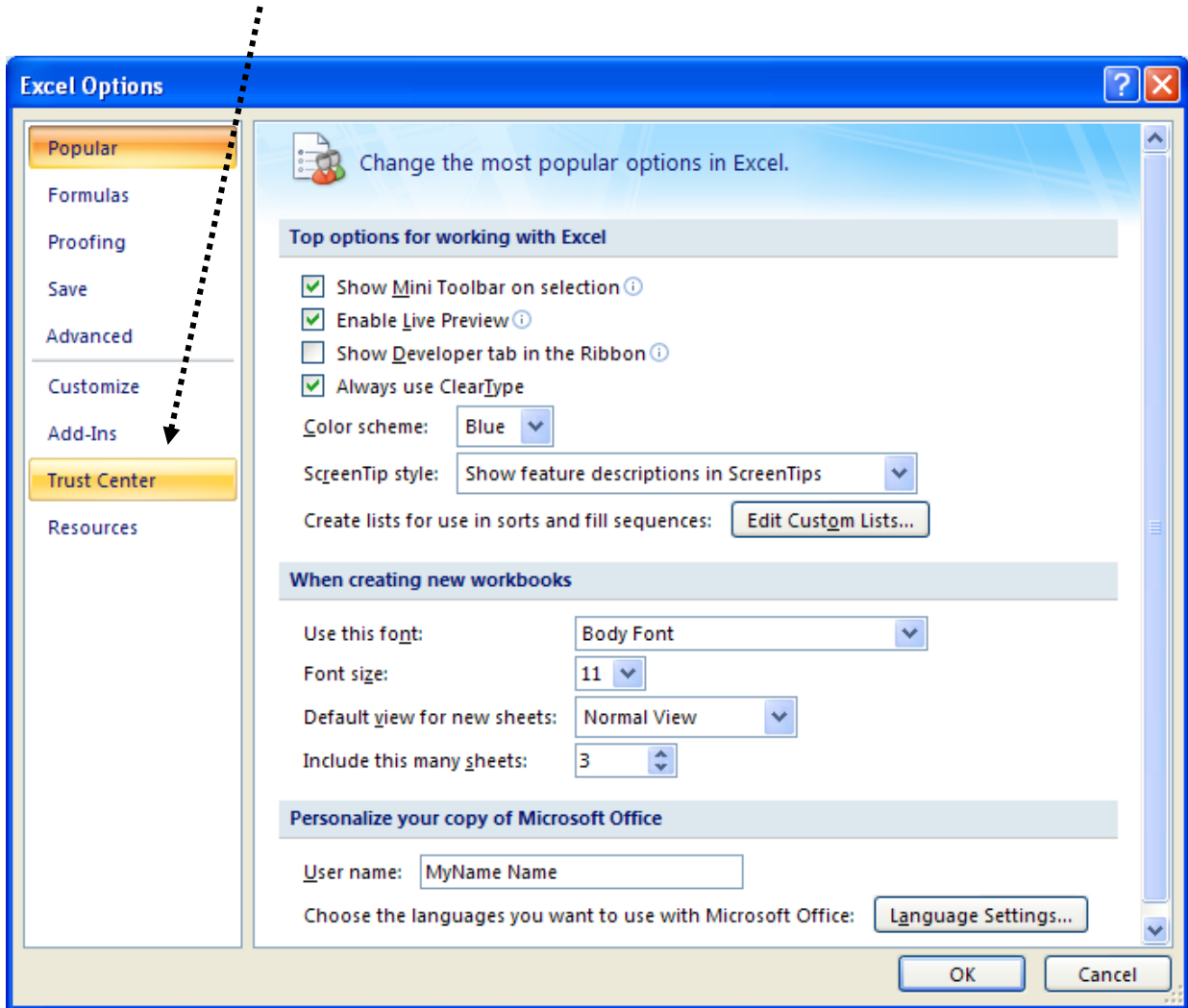


The following choices appear. Select 'Excel Options'.



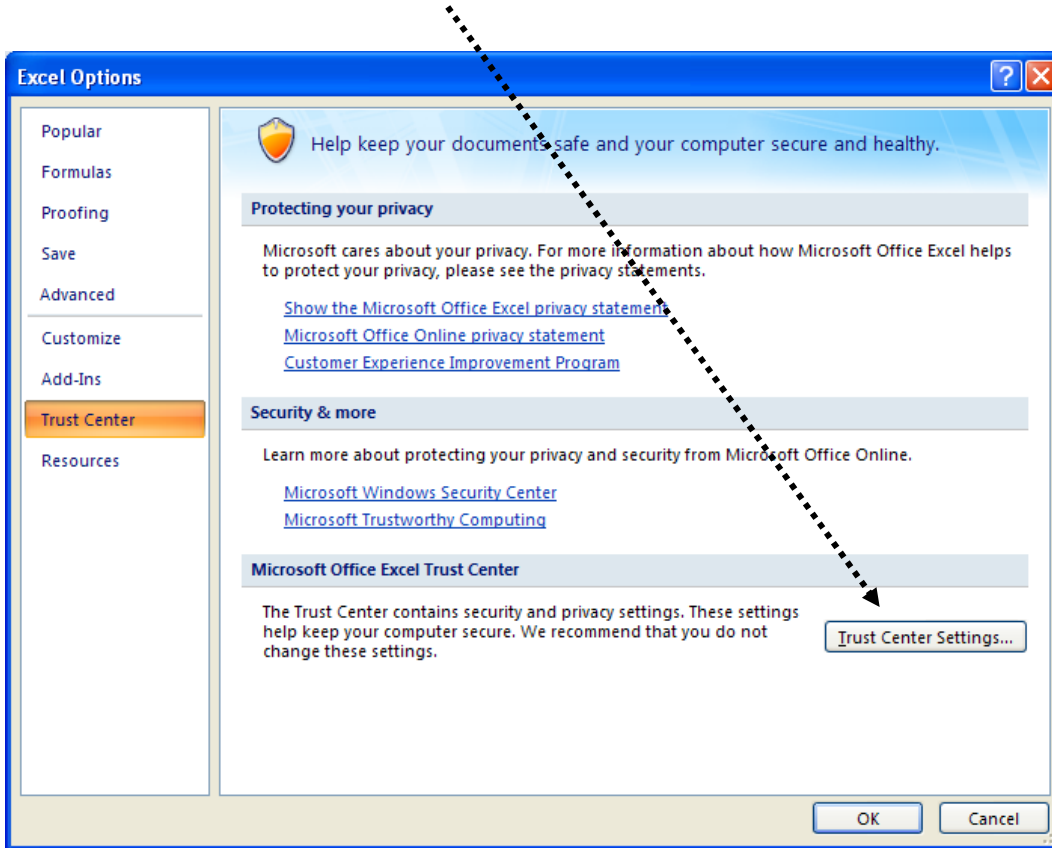


2. Select 'Trust Center'.

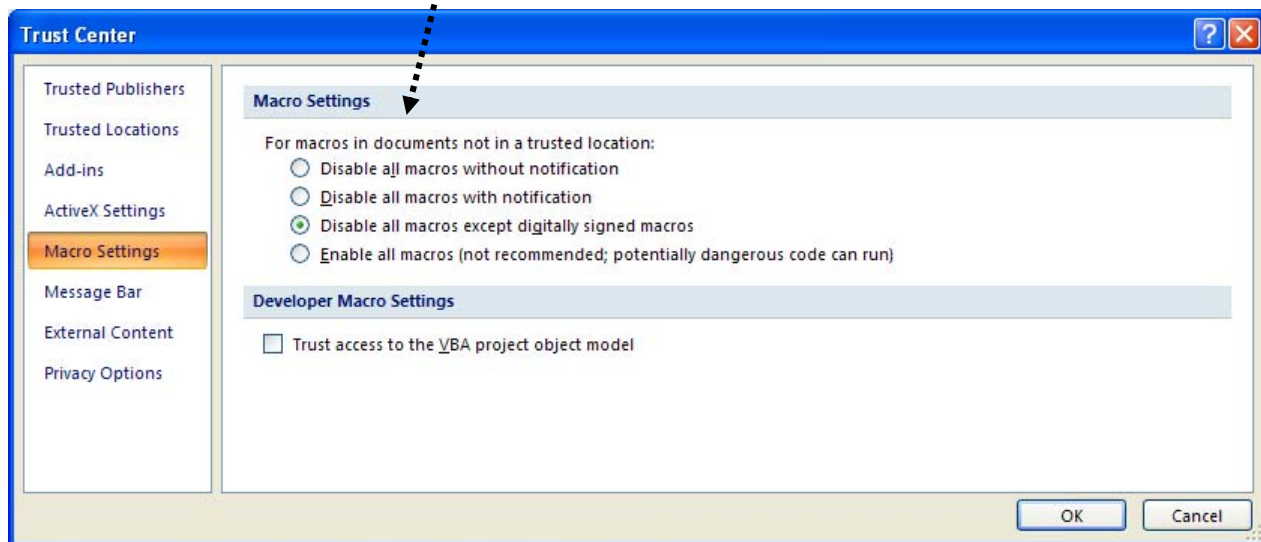




3. Then, select 'Trust Center Settings' from the following window that will appear.



4. Select 'Disable all macros except digitally signed macros'. The default is 'Disable all macros with notification'.

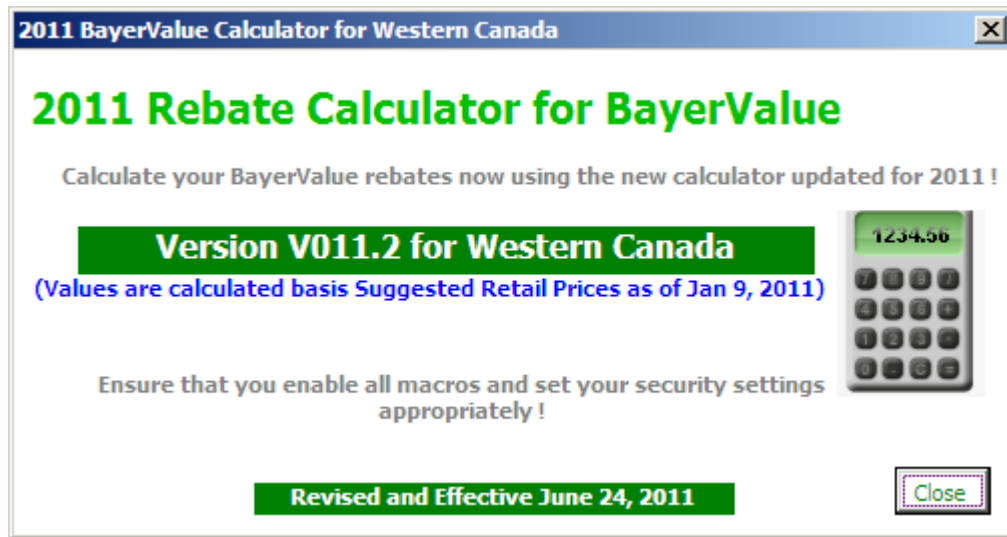




7. At this point your security settings will have been changed once you have followed these guidelines.

Conclusions

After making your changes to your security settings and enabling macros and then re-opening the file, the following two splash screens will appear in succession as you open the file. This is assurance that macros have been enabled.





PLEASE NOTE : Message from Bayer CropScience Inc.

BayerValue

DISCLAIMER: The use of this Rebate Calculator is for estimate purposes only! Rebate will be calculated and paid based on actual purchases. Proof of purchase is transactional data as supplied by your retailer. The farm must also be enrolled in the program and consent given by the grower, must be on file at BCS.

Eligible products for the 2010 program must be purchased within the period **October 1, 2010 to September 30, 2011** inclusive.

This is version V011.2 of the 2011 BayerValue Rebate Calculator. This program is to be used for calculating potential BayerValue Rebates! Values are based on current Suggested Retail Prices.

1. You can enter data for a farm and then Preview and Print the output, by using FILE PRINT or PRINT PREVIEW on the upper menu bar using the regular Excel commands, or, by using the 'Print Report' button on the Calculator.
2. Then click RESET to start a new session.
3. You can also save this file, using FILE SAVE AS, also on the upper menu bar. In this manner, you have a stored copy for future reference.
4. PLEASE READ other notes in the 'Instructions' tab of this Rebate Calculator to ensure familiarity with the calculations.

This version of the 2011 BayerValue Rebate Calculator, Version V011.2, is for general public use. For more specific information call us toll-free at 1-888-283-6847. Program details are also on the Web site at www.bayercropscience.com. Click the BayerValue icon at the top of this screen to access this site information.

Close

End of Document