



### Instructions for the Usage of the 2011 BayerValue Rebate Calculator

These instructions are organized according to the following sections. You can use the bookmarks to go directly to that section!

- 
- Section A Follow These Steps!
  - Section B Applying the Navigation Buttons
  - Section C Applying Other Buttons - Examples of Screen Shots
  - Section D Printing a Report
  - Section E Using the "RESET" button
  - Section F Setting Security Settings for Excel 2003
  - Section G Setting Security Settings for Excel 2007
-



**Section A Follow These Steps!**

- 1) Change your Security Settings first - See Sections F and G. This is very critical otherwise the Calculator will not work!
- 2) Enter your product purchases and units.

**2011 BayerValue Rebate Calculator**  
for Corn, Cereal and Canola Growers

Enter Name of Grower:  Date of Calculation:

**Input Planned Purchases Here in Units!**

| Brandname             | Unit of Meas.  | Enter Units | Converted to: |       | Acres/Unit | Value        | Purchase |
|-----------------------|----------------|-------------|---------------|-------|------------|--------------|----------|
|                       |                |             | Acres         | Units |            |              |          |
| Buctril M             | 8.0 L jug      | 12.00       | 240.00        | 12.00 | 20         | \$ 1,584.00  |          |
| Concept               | 5.26 L         | 15.00       | 300.00        | 15.00 | 20         | \$ 3,270.00  |          |
| Converge Flexx        | 10.56L         | 32.00       | 2,560.00      | 32.00 | 80         | \$ 51,072.00 |          |
| Converge XT           | 2.64 L + 13.3L | 12.00       | 240.00        | 12.00 | 20         | \$ 6,168.00  | 300 +    |
| Folicur 432F          | 4.73 L         | 10.00       | 400.00        | 10.00 | 40         | \$ 5,100.00  | \$       |
| Infinity              | 6.7 L          | 15.00       | 300.00        | 15.00 | 20         | \$ 2,820.00  | \$       |
| Liberty 200 SN        | 10 L           | 5.00        | 50.00         | 5.00  | 10         | \$ 575.00    | \$       |
| Option Liquid 2.25 OD | 6.3 L          | 35.00       | 350.00        | 35.00 | 10         | \$ 9,660.00  | \$       |
| Proline 480 SC        | 5.1 L          | 5.00        | 200.00        | 5.00  | 40         | \$ 5,250.00  | \$       |
| Prosaro 250 EC        | 6.5 L          | 5.00        | 100.00        | 5.00  | 20         | \$ 1,647.50  | \$       |
| Puma Super 120        | 6.2 L          | 6.00        | 120.00        | 6.00  | 20         | \$ 1,650.00  | \$       |
| Stratego 250 EC       | 8.1 L          | 6.00        | 240.00        | 6.00  | 40         | \$ 2,256.00  | \$       |
| Vios G3               | 1.78 L         | 6.00        | 240.00        | 6.00  | 40         | \$ 4,074.00  | \$       |
| Sencor 480SC          | 5 L            | 1.00        | 10.00         | 1.00  | 10         | \$ 215.00    | \$       |
| Sencor 75DF           | 2.5 kg         | 2.00        | 15.00         | 2.00  | 8          | \$ 323.00    | \$       |

**Summary of Savings by Brand**

Concept \$  
 Converge Flexx \$  
 Converge XT \$  
 Folicur 432F \$  
 Infinity \$  
 Option Liquid 2.25 OD \$  
 Proline 480 SC \$  
 Prosaro 250 EC \$  
 Puma Super 120 \$  
 Stratego 250 EC \$  
 Vios G3 \$

You can use the toggle radio button to chose entering purchases in 'Acres' or 'Units' but you cannot use both, only one or the other.

If the following hint box is in your way, you can move it by dragging out of your way with the mouse.

**Data Entry !**  
 Enter Units ! You can move this box out of the way by dragging with your cursor, or click on another area of this form!

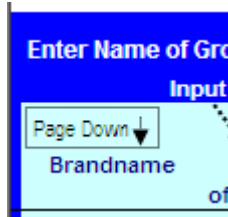


3) This Calculator has been designed to produce the rebate estimate automatically as soon as you enter your purchases. There are no buttons required to click in order to produce a calculation.



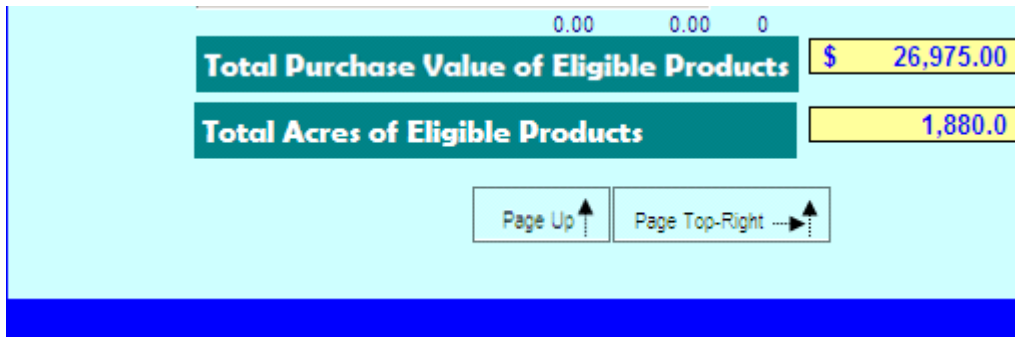
## Section B Applying the Navigation Buttons

This Calculator is divided into four quadrants. Depending on the size of your computer screen and screen resolution, you may not be able to view the entire spreadsheet, therefore, navigation buttons have been added to help you move around the spreadsheet. They are located throughout the spreadsheet as illustrated below.



These navigation icons allow you to move to any of the four quadrants of the spreadsheet.

For example, by clicking on the above navigation button you go down one page to the bottom left of the spreadsheet.





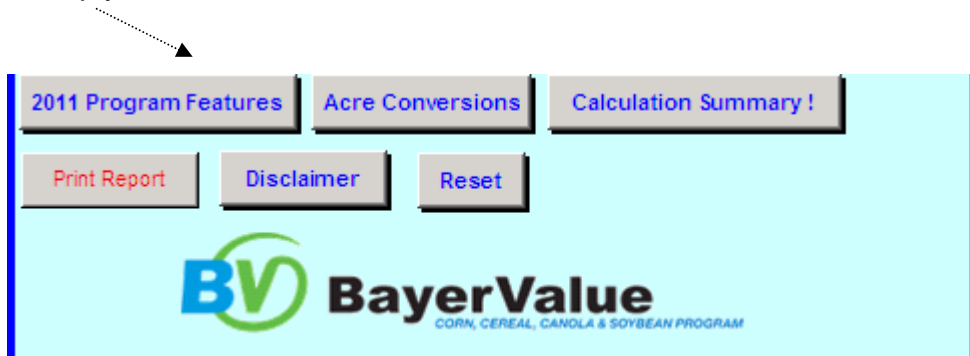
In the example above, you can page to the 3<sup>rd</sup> quadrant of the calculator to find important items such as the total amount of the estimated rebate.

| BayerValue Program                         |                | Page Down ↓                       | Page Top-Left ←▲           |
|--|----------------|-----------------------------------|----------------------------|
| Value                                      | Purchase Value | Savings Level %                   | Rebate \$ Savings per Acre |
| 1,584.00                                   |                |                                   |                            |
| 3,270.00                                   |                |                                   |                            |
| 51,072.00                                  |                |                                   |                            |
| 6,168.00                                   |                |                                   |                            |
| 5,100.00                                   |                |                                   |                            |
| 2,820.00                                   |                |                                   |                            |
| 575.00                                     |                |                                   |                            |
| 9,660.00                                   |                |                                   |                            |
| 5,250.00                                   |                |                                   |                            |
| 1,647.50                                   |                |                                   |                            |
| 1,650.00                                   |                |                                   |                            |
| 2,256.00                                   |                |                                   |                            |
| 4,074.00                                   |                |                                   |                            |
| 215.00                                     |                |                                   |                            |
| 323.00                                     |                |                                   |                            |
| <b>Summary of Savings by Brand</b>         |                |                                   |                            |
|  |                | <b>300 + Acre Level reached !</b> |                            |
| <b>Concept</b>                             | \$ 3,270.00    | 5.0%                              | \$ 163.50 \$ 0.55          |
| <b>Converge Flexx</b>                      | \$ 51,072.00   | 5.0%                              | \$ 2,553.60 \$ 1.00        |
| <b>Converge XT</b>                         | \$ 6,168.00    | 5.0%                              | \$ 308.40 \$ 1.29          |
| <b>Folicur 432F</b>                        | \$ 5,100.00    | 5.0%                              | \$ 255.00 \$ 0.64          |
| <b>Infinity</b>                            | \$ 2,820.00    | 5.0%                              | \$ 141.00 \$ 0.47          |
| <b>Option Liquid 2.25 OD</b>               | \$ 9,660.00    | 28.0%                             | \$ 2,704.80 \$ 7.73        |
| <b>Proline 480 SC</b>                      | \$ 5,250.00    | 25.0%                             | \$ 1,312.50 \$ 6.56        |
| <b>Prosaro 250 EC</b>                      | \$ 1,647.50    | 5.0%                              | \$ 82.38 \$ 0.82           |
| <b>Puma Super 120</b>                      | \$ 1,650.00    | 5.0%                              | \$ 82.50 \$ 0.69           |
| <b>Stratego 250 EC</b>                     | \$ 2,256.00    | 5.0%                              | \$ 112.80 \$ 0.47          |
| <b>Vios G3</b>                             | \$ 4,074.00    | 5.0%                              | \$ 203.70 \$ 0.85          |
| <b>Total BayerValue Estimated Savings:</b> |                |                                   | <b>\$ 7,920.18</b>         |
| <b>Overall Savings %:</b>                  |                |                                   | <b>8.28%</b>               |
| 2011 Program Features                      |                | Acre Conversions                  | Calculation Summary !      |
| Print Report                               |                | Disclaimer                        | Reset                      |



## Section C Applying Other Buttons - Examples of Screen Shots

There are other buttons at the bottom of the spreadsheet which contain certain types of information. Simply click on the button of choice.



For example, pressing the '2011 Program Features' button contains information explaining the nature of the grower program.

2011 Guidelines, page 1.0

### BAYER CROPSCIENCE - BayerValue Grower Programs Ontario, Quebec and Atlantic Provinces

This program is open to growers in Ontario, Quebec, Nova Scotia, New Brunswick and Prince Edward Island that purchase a minimum of 2 of the qualifying products that in combination total a minimum of 80 acres.

Qualifying Products:

The following products,

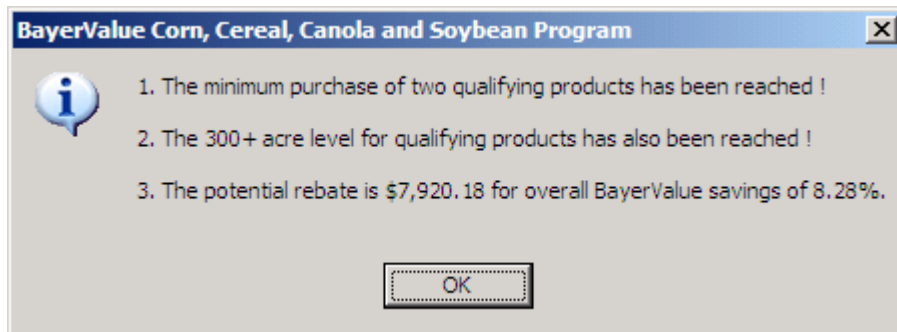
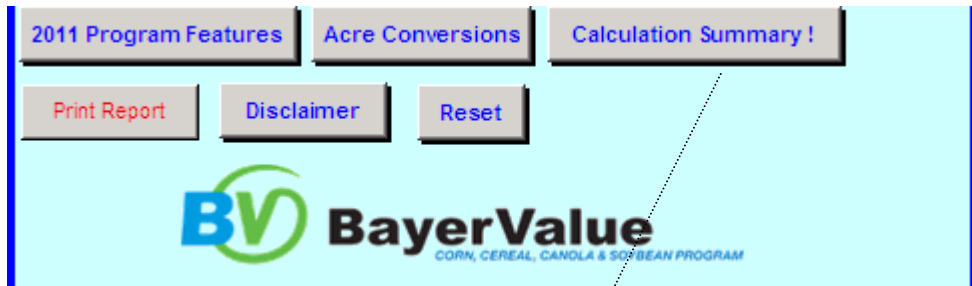
|                                  |                 |
|----------------------------------|-----------------|
| Buctril® M                       | Proline®        |
| Concept®                         | Prosaro® 250 EC |
| Converge Flexx®                  | Puma® Advance   |
| Converge® XT                     | Puma Super      |
| Folicur® 432F                    | Option® 2.25 OD |
| Folicur 250EW                    | Sencor® 75DF    |
| Infinity®                        | Sencor 480F     |
| InVigor® Hybrid Canola varieties | Stratego®       |
| Liberty® 200 SN                  | Vios® G3        |

purchased by the grower between October 1, 2010 and September 30, 2011.

Next >> Close



The following screen is an example of when you click on 'Calculation Summary'. A popup message box appears. It shows you some summary level information based on what numbers have been entered into the calculator.





## Section D Printing a Report

Once you have entered all purchases and run the calculations, you can print or preview a report using the button "Print Report". This is an example of what the report would look like. Please note due to scaling, resolutions will be higher on actual printed copy

**2011 BayerValue Rebate Calculator**

for Corn, Cereal and Canola Growers

Bayer CropScience

7-Mar-11

Enter Name of Grower:

Input Planned Purchases Here In Units

| Brandname             | Unit of Meas | Enter Units | Converted to: Acres | Unit/b | Acres/Unit | Value        |
|-----------------------|--------------|-------------|---------------------|--------|------------|--------------|
| Buctril M             | 80L/jug      | 12.00       | 240.00              | 12.00  | 20         | \$ 1,584.00  |
| Concept               | 5.25L        | 15.00       | 300.00              | 15.00  | 20         | \$ 3,270.00  |
| Converge Flexx        | 105L         | 32.00       | 2,860.00            | 32.00  | 80         | \$ 51,072.00 |
| Converge XT           | 264L+133L    | 12.00       | 240.00              | 12.00  | 20         | \$ 6,168.00  |
| Follicur 432F         | 4.73L        | 10.00       | 400.00              | 10.00  | 40         | \$ 5,100.00  |
| Infinity              | 6.7L         | 15.00       | 300.00              | 15.00  | 20         | \$ 2,820.00  |
| Liberty 200 SN        | 10L          | 5.00        | 50.00               | 5.00   | 10         | \$ 575.00    |
| Option Liquid 2.25 OD | 63L          | 35.00       | 350.00              | 35.00  | 10         | \$ 9,660.00  |
| Proline 480 SC        | 51L          | 5.00        | 200.00              | 5.00   | 40         | \$ 5,250.00  |
| Prosaro 250 EC        | 65L          | 5.00        | 100.00              | 5.00   | 20         | \$ 1,647.50  |
| Puma Super 120        | 62L          | 5.00        | 120.00              | 6.00   | 20         | \$ 1,650.00  |
| Stratego 250 EC       | 81L          | 6.00        | 240.00              | 6.00   | 40         | \$ 2,286.00  |
| Vios G3               | 1.78L        | 6.00        | 240.00              | 6.00   | 40         | \$ 4,074.00  |
| Senoor 480SC          | 5L           | 1.00        | 10.00               | 1.00   | 10         | \$ 215.00    |
| Senoor 75DF           | 25kg         | 2.00        | 15.00               | 2.00   | 8          | \$ 323.00    |

Date of Calculation:

**BayerValue Program**

|                                    | Purchase Value | Savings Level % | Rebate \$   | Savings per Acre |
|------------------------------------|----------------|-----------------|-------------|------------------|
| <b>Summary of Savings by Brand</b> |                |                 |             |                  |
| <b>300 + Acre Level reached !</b>  |                |                 |             |                  |
| Concept                            | \$ 3,270.00    | 5.0%            | \$ 163.50   | \$ 0.55          |
| Converge Flexx                     | \$ 51,072.00   | 5.0%            | \$ 2,553.60 | \$ 1.00          |
| Converge XT                        | \$ 6,168.00    | 5.0%            | \$ 308.40   | \$ 1.29          |
| Follicur 432F                      | \$ 5,100.00    | 5.0%            | \$ 255.00   | \$ 0.64          |
| Infinity                           | \$ 2,820.00    | 5.0%            | \$ 141.00   | \$ 0.47          |
| Option Liquid 2.25 OD              | \$ 9,660.00    | 28.0%           | \$ 2,704.80 | \$ 7.73          |
| Proline 480 SC                     | \$ 5,250.00    | 28.0%           | \$ 1,312.50 | \$ 6.86          |
| Prosaro 250 EC                     | \$ 1,647.50    | 5.0%            | \$ 82.38    | \$ 0.82          |
| Puma Super 120                     | \$ 1,650.00    | 5.0%            | \$ 82.50    | \$ 0.69          |
| Stratego 250 EC                    | \$ 2,286.00    | 5.0%            | \$ 112.80   | \$ 0.47          |
| Vios G3                            | \$ 4,074.00    | 5.0%            | \$ 203.70   | \$ 0.85          |

**Enter InVigor Acres Here !**

|                                   |      |      |      |
|-----------------------------------|------|------|------|
| <input type="text" value="None"/> | 0.00 | 0.00 | \$ - |
| <input type="text" value="None"/> | 0.00 | 0.00 | \$ - |
| <input type="text" value="None"/> | 0.00 | 0.00 | \$ - |
| <input type="text" value="None"/> | 0.00 | 0.00 | \$ - |

**Total Purchase Value of Eligible Products** \$ 96,664.50

**Total Acres of Eligible Products** 6,365.0

**Total BayerValue Estimated Savings** \$ 7,920.18

**Overall Savings %** 8.28%

2011 Program Features    Acre Conversions    Calculation Summary !

[Disclaimer](#)

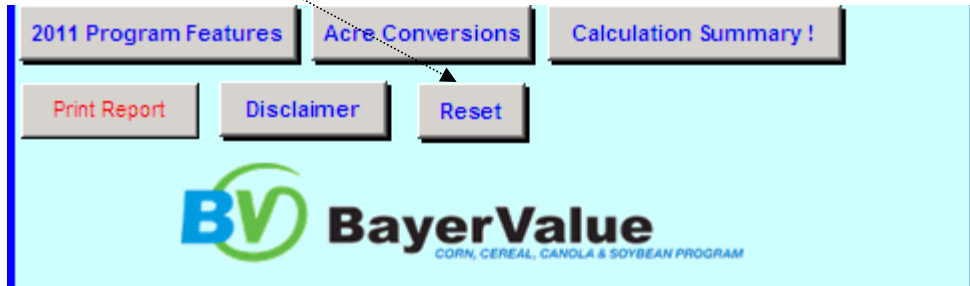
BayerValue  
CORN, CEREAL, CANOLA & SOYBEAN PROGRAM

Version V811.1 (Effective January 18, 2011)



## Section E Using the "RESET" button

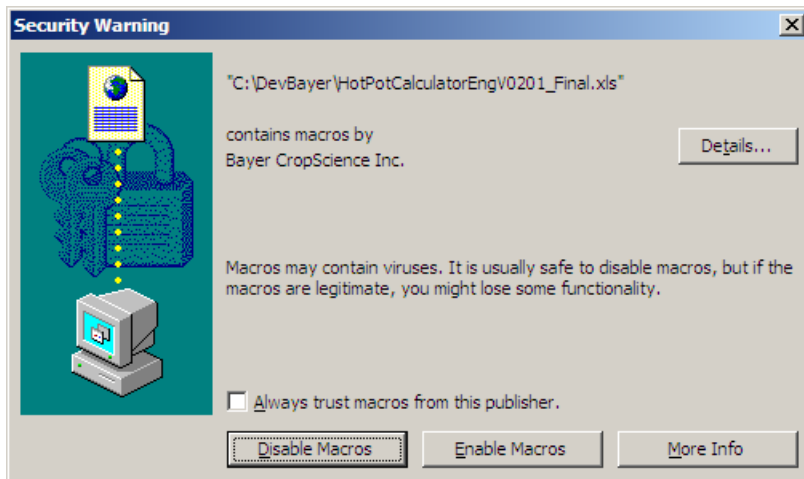
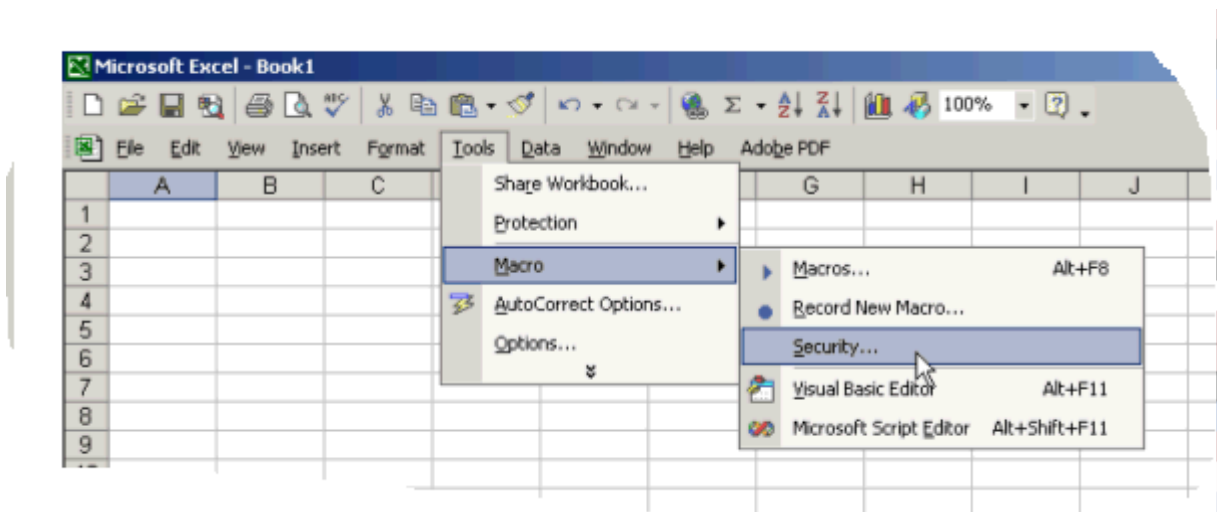
By clicking on the RESET button, you clear the spreadsheet of any information you may have entered. All calculations are also cleared. This allows you to start a new calculation for another scenario or farm account. You should save your information to a unique filename before using RESET.





## Section F Setting Security Settings for Excel 2003

- 1) In order for the 'buttons' on the Calculator to work, you must configure this Excel spreadsheet as indicated in these screen shots and steps. Change the security settings to Medium.
- 2) Once completed, you will have to re-open the Calculator spreadsheet.
- 3) When you re-open the spreadsheet, "Enable the Macros". This will ensure the 'buttons' work. These 'buttons' contain important information as described in earlier sections of this document.



- 4) Once these steps are completed you can re-open the Calculator unless these steps were completed in a prior session. You only have to configure this security once.



## **Section G            Setting Security Settings for Excel 2007**

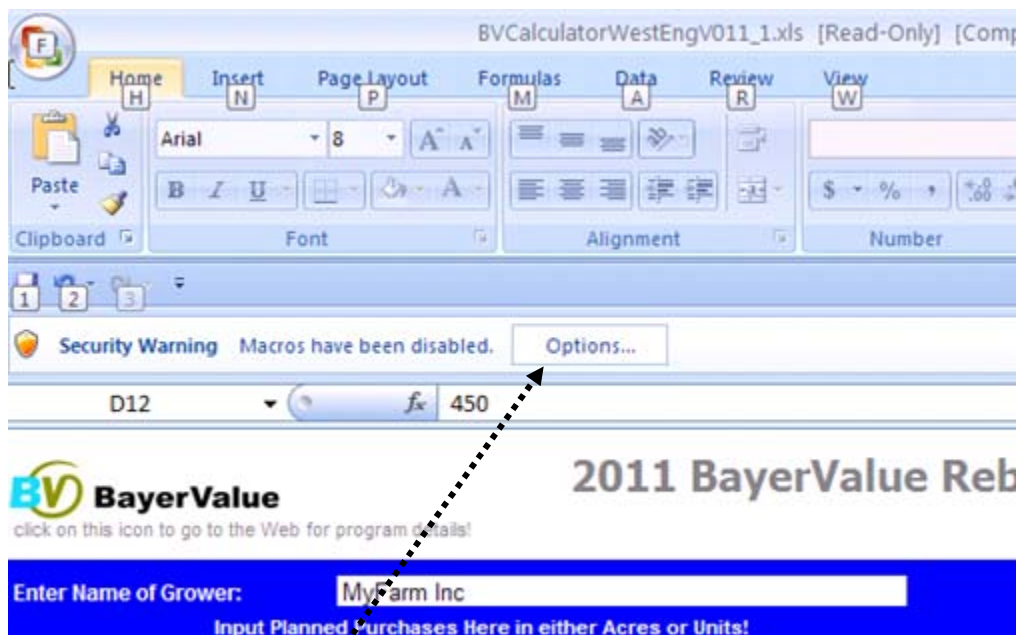
To change security settings in Windows Vista or Windows 7, for Excel macros, this is done directly in Excel.

This Calculator was developed in Excel 2003. However, it will also work in Excel 2007 in what is referred to as Compatibility Mode. Simply opening this file up in Excel 2007 will put the file in Compatibility Mode. However, to ensure the macros and computer VBA code work in Excel 2007, you must adjust Excel's security settings. If you are not comfortable on how to do this, consult with your System Administrator.

To change the security settings in Excel 2007, follow either one of these approaches;

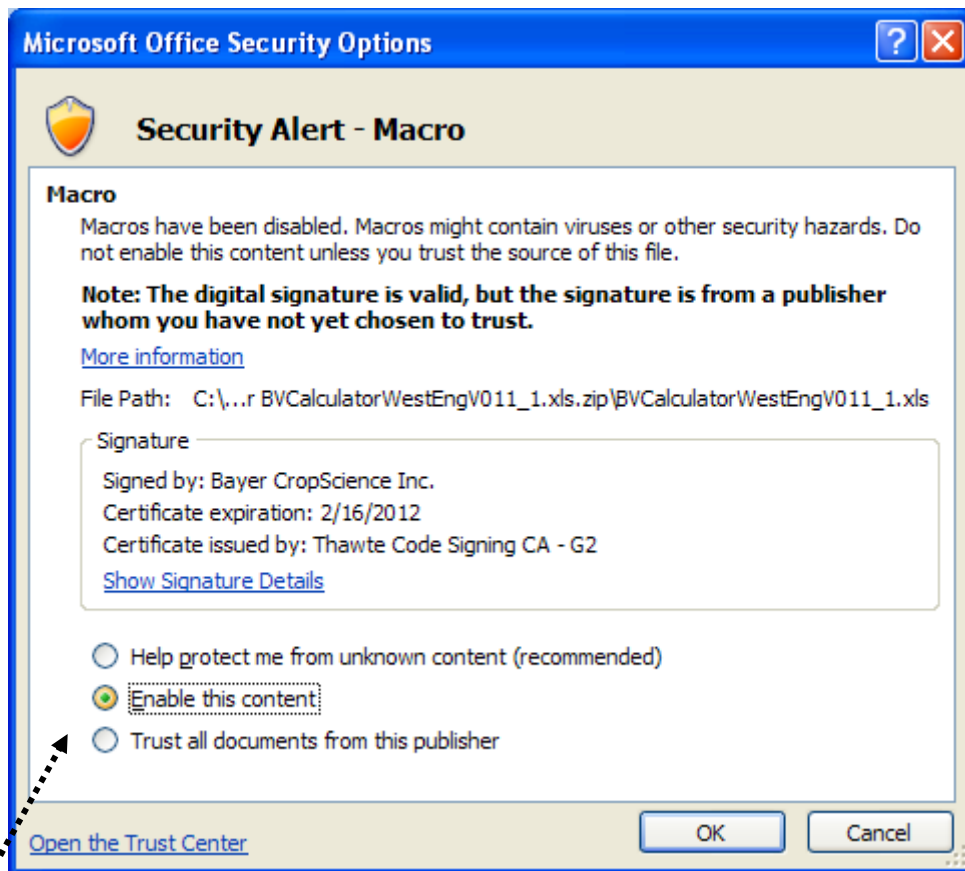
### **First approach;**

1. When you open the Calculator filename in Excel 2007, the following window appears; (Your System Administrator may have your Views altered to look somewhat different than what is shown in this illustration but the look and feel will be very similar to what you see here).
2. A security warning will appear, implying that some content of the Calculator will be disabled. This content must be enabled in order for the Calculator to be functional.



3. Click on 'Options' and the following window will appear:

(Incidentally the screen shot shown above applies to another Bayer CropScience program, however, but the method of setting security settings is also valid for the BayerValue Rebate Calculator).

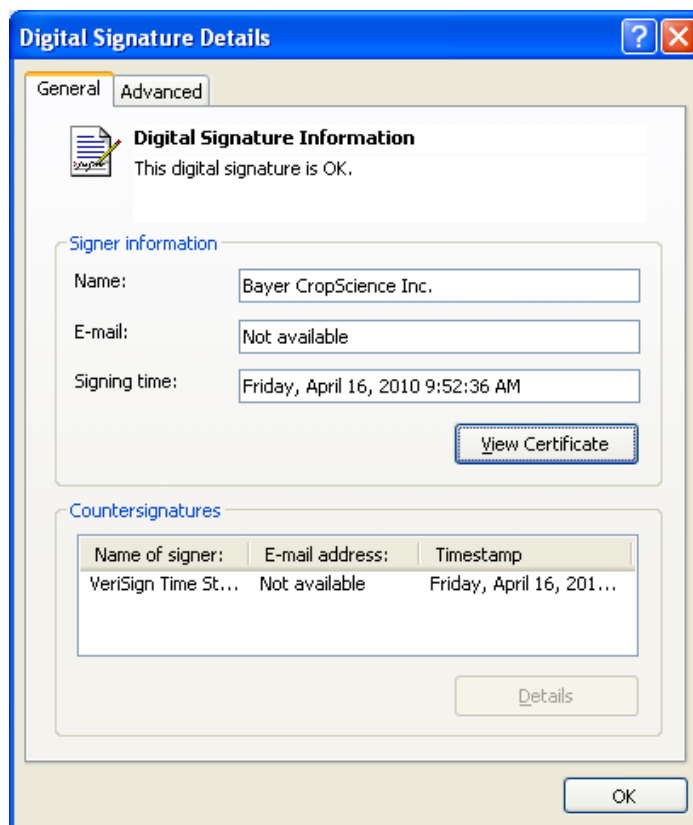


4. This window allows you the choice of leaving the default as is, enabling this content, or trusting the publisher. If you want to view who the publisher is and confirm that this Calculator was digitally signed by this publisher, then you can click on 'Show Signature Details'.

It is your decision whether you want to trust this publisher or enable this content. If you are unsure, consult with your Systems Administrator. Bearing in mind, not applying either of these two choices will not enable this Calculator to function as intended.

5. The following window appears if you click on 'Show Signature Details' as indicated in the previous bullet point.

This window allows you to view the digital certificate from Bayer CropScience.

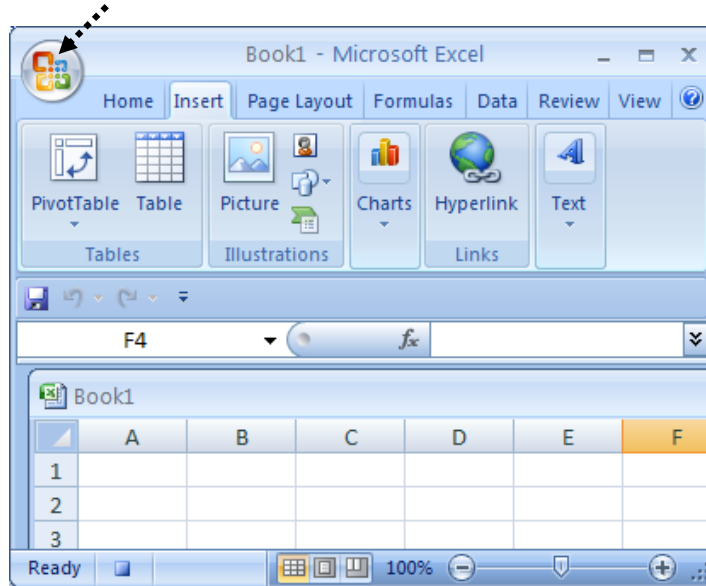


6. If you selected 'Enable this content' or 'Trust all documents from this publisher' then your security settings have been changed.

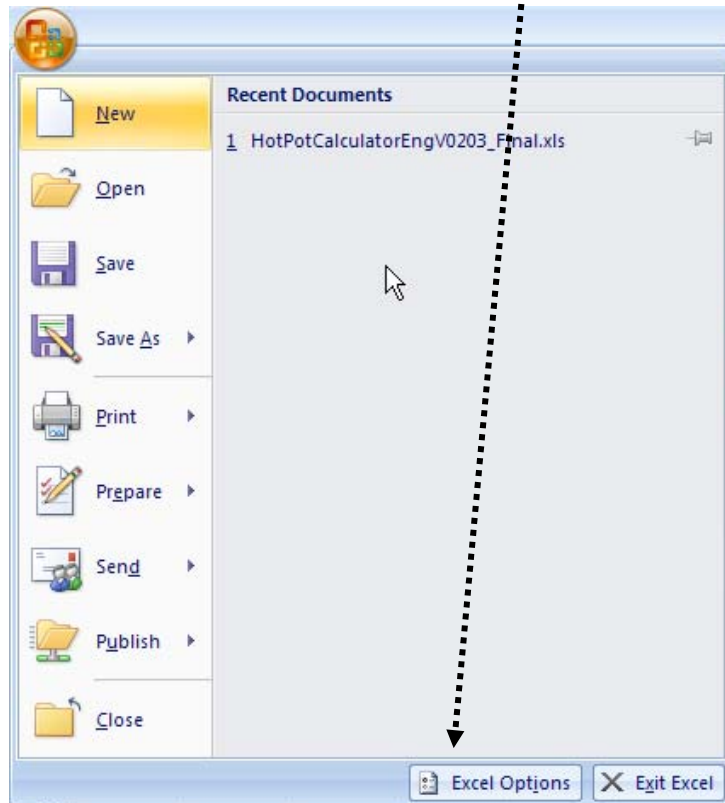


## Second Approach

1. From the main Excel menu bar, click on the Microsoft logo.

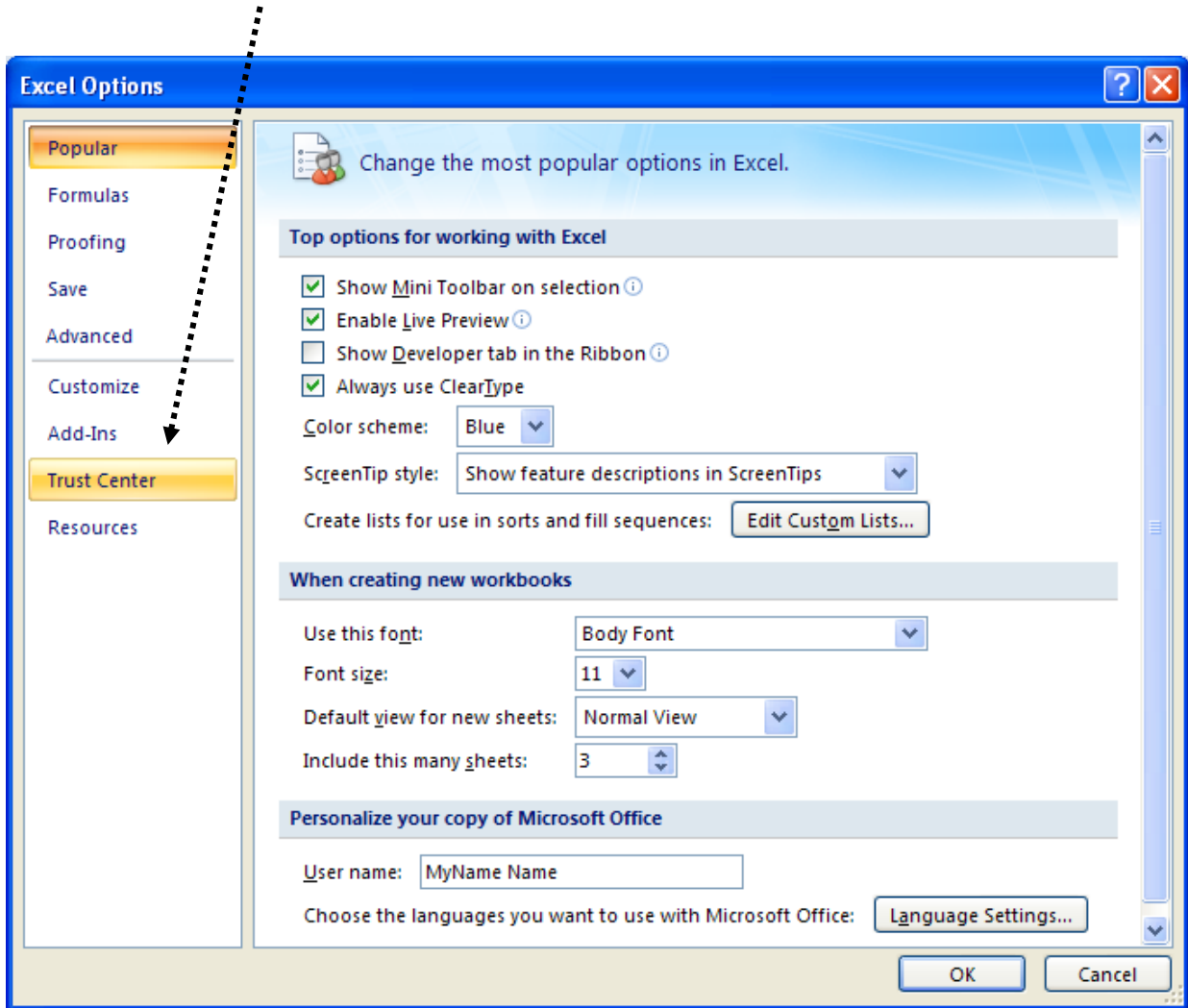


The following choices appear. Select 'Excel Options'.



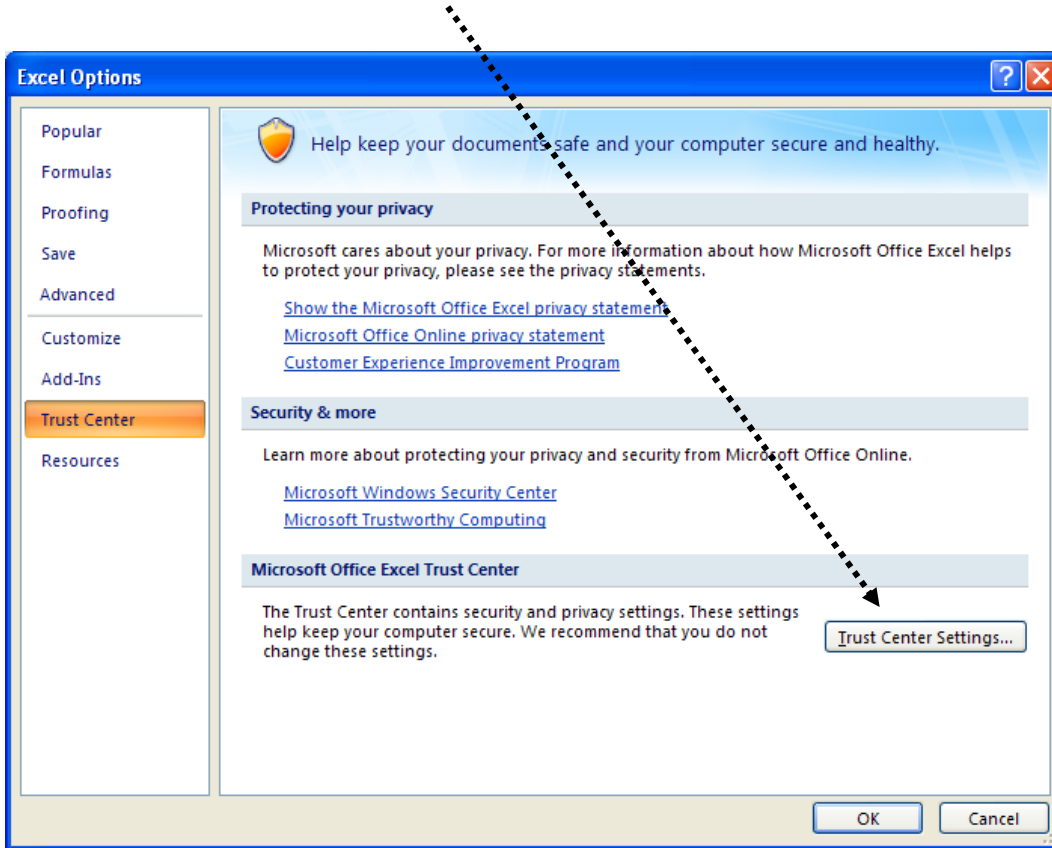


2. Select 'Trust Center'.

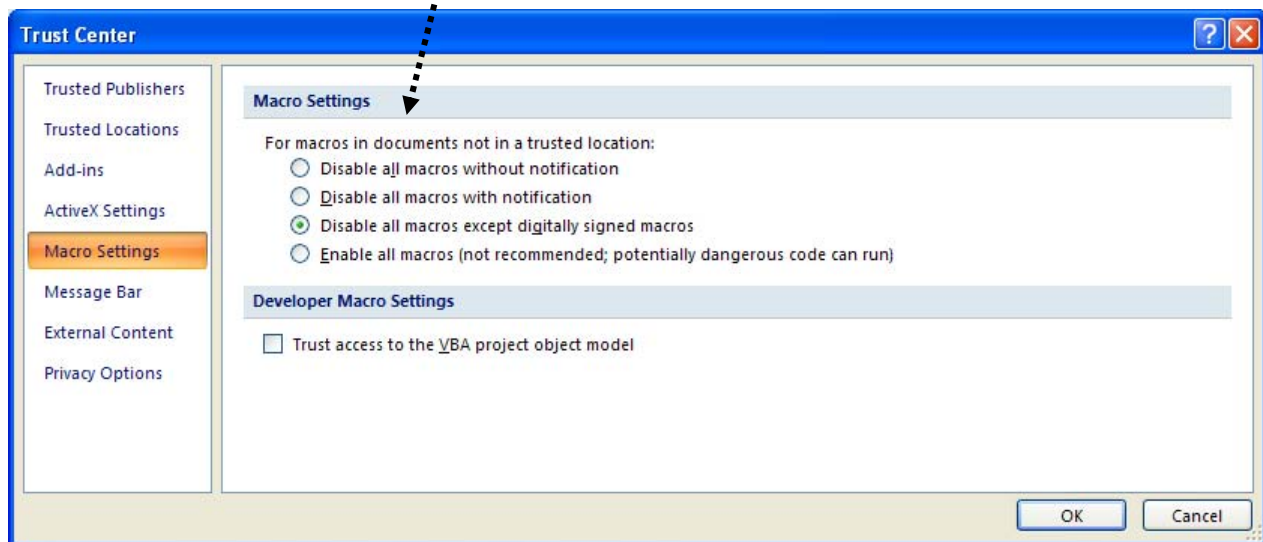




3. Then, select 'Trust Center Settings' from the following window that will appear.



4. Select 'Disable all macros except digitally signed macros'. The default is 'Disable all macros with notification'.





7. At this point your security settings will have been changed once you have followed these guidelines.

### Conclusions

After making your changes to your security settings and enabling macros and then re-opening the file, the following two splash screens will appear in succession as you open the file. This is assurance that macros have been enabled.





**PLEASE NOTE : Message from Bayer CropScience Inc.**

**BayerValue**

**DISCLAIMER:** The use of this Rebate Calculator is for estimate purposes only! Rebate will be calculated and paid based on actual purchases. Proof of purchase is transactional data as supplied by your retailer. The farm must also be enrolled in the program and consent given by the grower, must be on file at BCS.

Eligible products for the 2010 program must be purchased within the period **October 1, 2010 to September 30, 2011** inclusive.

**This is version V011.1 of the 2011 BayerValue Rebate Calculator.** This program is to be used for calculating potential BayerValue Rebates! Values are based on current Suggested Retail Prices.

1. You can enter data for a farm and then Preview and Print the output, by using FILE PRINT or PRINT PREVIEW on the upper menu bar using the regular Excel commands, or, by using the 'Print Report' button on the Calculator.
2. Then click RESET to start a new session.
3. You can also save this file, using FILE, SAVE AS, also on the upper menu bar. In this manner, you have a stored copy for future reference.
4. An 'Instructions' file is available from the same area of the Web site as this Rebate Calculator, to assist you in becoming familiar with the calculations.

**This version of the 2011 BayerValue Rebate Calculator, Version V011.1, is for general public use. For more specific information call us toll-free at 1-888-283-6847. Program details are also on the Web site at [www.bayercropscience.com](http://www.bayercropscience.com). Click the BayerValue icon at the top of this screen to access this site information.**

Close

**End of Document**